

**SUBDIVISION PLAN OF LOT 2 SECTION 24
TOWNSHIP 28 SDYD PLAN KAP90635**

PLAN EPP125453

BCGS 82E.073

15 10 5 0 10 25 50 METRES

THE INTENDED PLOT SIZE OF THIS PLAN IS 432mm IN WIDTH BY 560mm IN HEIGHT (C SIZE) WHEN PLOTTED AT A SCALE OF 1:500

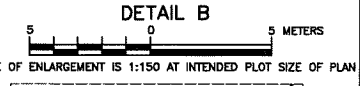
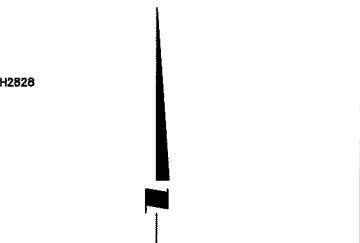
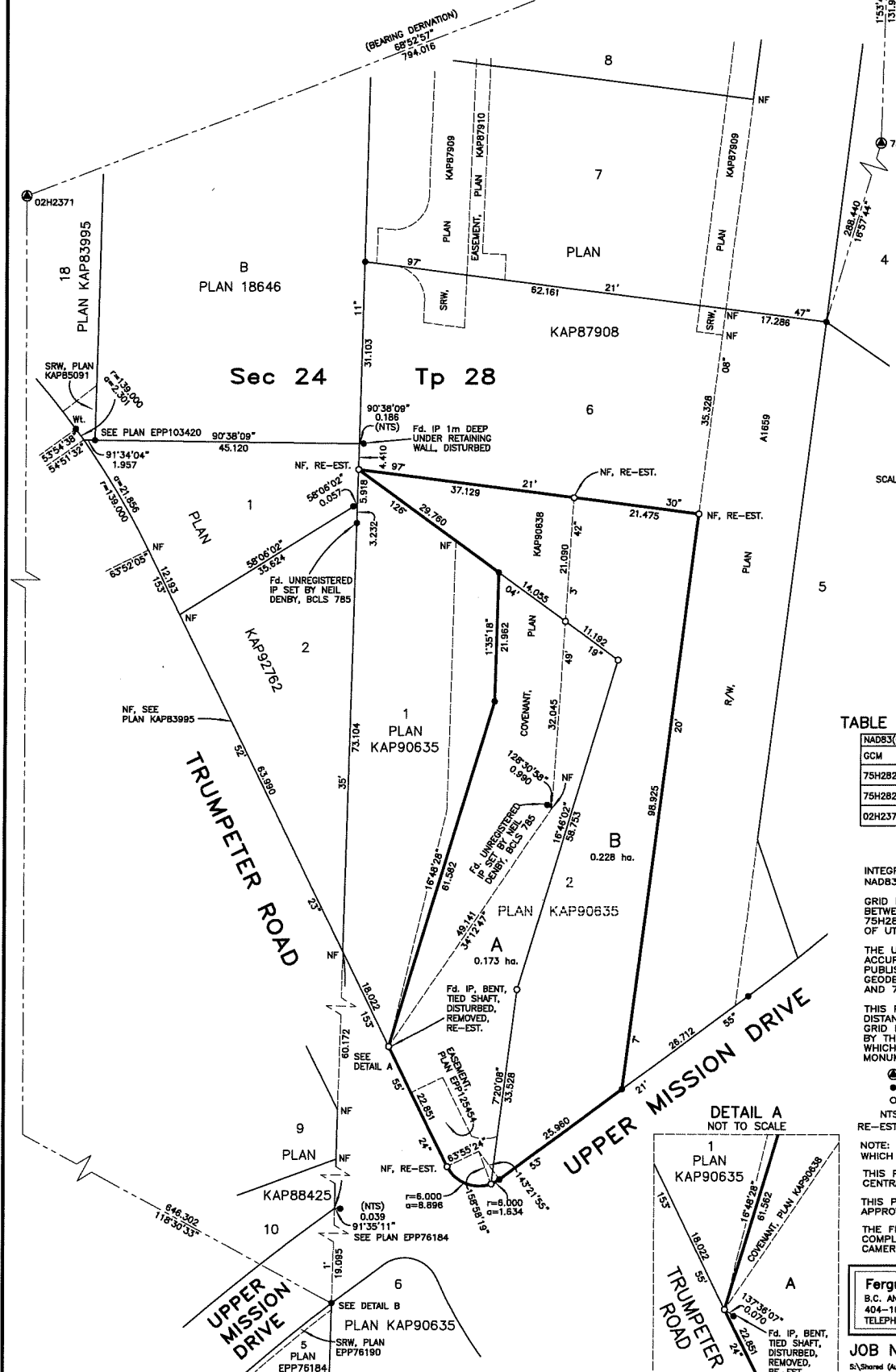


TABLE OF GEODETIC CONTROL MONUMENTS

NAD83(CSRS)	4.0.0.BC.1	UTM	ZONE 11	COORDINATES	ESTIMATED ABSOLUTE ACCURACY
GCM	NORTHING	EASTING			
75H2821	5519155.824	320082.548			0.09
75H2828	5519023.956	320078.183			0.09
02H2371	5518869.828	319341.896			0.01

LEGEND

INTEGRATED SURVEY AREA NO. 4, CITY OF KELOWNA, NAD83 (CSRS) 4.0.0.BC.1

GRID BEARINGS ARE DERIVED FROM OBSERVATIONS BETWEEN GEODETIC CONTROL MONUMENTS 02H2371 AND 75H2821 AND ARE REFERRED TO THE CENTRAL MERIDIAN OF UTM ZONE 11.

THE UTM COORDINATES AND ESTIMATED ABSOLUTE ACCURACY ACHIEVED ARE DERIVED FROM MASCOT PUBLISHED COORDINATES AND STANDARD DEVIATIONS FOR GEODETIC CONTROL MONUMENTS 02H2371, 75H2821 AND 75H2828.

THIS PLAN SHOWS HORIZONTAL GROUND-LEVEL DISTANCES UNLESS OTHERWISE SPECIFIED. TO COMPUTE GRID DISTANCES, MULTIPLY GROUND-LEVEL DISTANCES BY THE AVERAGE COMBINED FACTOR OF 0.9998229 WHICH HAS BEEN DERIVED FROM GEODETIC CONTROL MONUMENTS 02H2371, 75H2821 AND 75H2828.

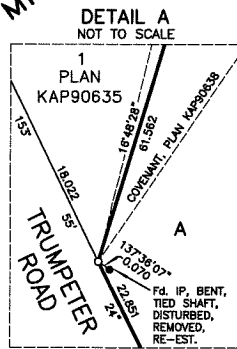
- DENOTES CONTROL MONUMENT FOUND
- DENOTES STANDARD IRON POST FOUND
- DENOTES STANDARD IRON POST PLACED
- NTS DENOTES NOT TO SCALE
- RE-EST. DENOTES RE-ESTABLISHED

NOTE: THIS PLAN SHOWS ONE OR MORE WITNESS POSTS WHICH ARE NOT SET ON THE TRUE CORNER(S).

THIS PLAN LIES WITHIN THE REGIONAL DISTRICT OF CENTRAL OKANAGAN.

THIS PLAN LIES WITHIN THE JURISDICTION OF THE APPROVING OFFICER FOR THE CITY OF KELOWNA.

THE FIELD SURVEY REPRESENTED BY THIS PLAN WAS COMPLETED ON THE 19th DAY OF MAY, 2023 CAMERON HENRY, BCLS 857



Ferguson Land Surveying & Geomatics Ltd.
B.C. AND CANADA LAND SURVEYORS
404-1830 PANDOSY STREET, KELOWNA, B.C.
TELEPHONE (250) 763-3115 FAX (250) 763-0321

JOB No 22283-SUB
23:Shard (Aug 10, 2004)\Job_Files\22283\22283-CAD\22283-SUB1-ROTATE.DWG
DWG TO: CH FB/PS; SEE FILE